

ACCESSORI & OPZIONI
ACCESSORIES & OPTIONS

Codice Part Nr.	DESCRIZIONE DESCRIPTION	P106 D	P106 PLUS	P111 D	P112 D	P112 WD	P125 WD	P135 WD	P258 WD	P258 WDM	P258 WDB	A111 WD	A127 WD	A258 WD	A258 WDM	A258 WDB
223244	Easy Ø 32	●		●												
223245	Easy Extra Ø 32		●		●											
223247	Easy Ø 37					●	●	●				●	●			
223248	Easy Ø 40								●	●	●			●	●	●
204652	Filtro in stoffa permanente Permanent cloth filter	-	-	●	●	●	●	●	-	-	-	●	●	-	-	-
204577	Filtro in stoffa permanente Permanent cloth filter	-	-	-	-	-	-	-	●	●	●	-	-	●	●	●
405417	Filtro cartuccia Cartridge filter	○	●	-	-	-	-	-	-	-	-	-	-	-	-	-
405418	Filtro cartuccia HEPA HEPA cartridge filter	○	○	-	-	-	-	-	-	-	-	-	-	-	-	-
405419	Filtro aria in uscita Way out air filter	●	●	-	-	-	-	-	-	-	-	-	-	-	-	-
405421	Filtro carboni attivi Active charcoal filter	○	○	-	-	-	-	-	-	-	-	-	-	-	-	-
405420	Filtro HEPA aria in uscita Way out air HEPA filter	○	○	-	-	-	-	-	-	-	-	-	-	-	-	-
405436	Filtro cartuccia Cartridge filter	-	-	○	○	○	○	○	○	○	○	○	○	○	○	○
405433	Filtro cartuccia lavabile Washable cartridge filter	-	-	○	○	○	○	○	○	○	○	○	○	○	○	○
405434	Filtro cartuccia HEPA HEPA cartridge filter	-	-	○	○	○	○	○	○	○	○	○	○	○	○	○
204619	Sacco carta doppio strato Dual layer paper bag	●	●	-	-	-	-	-	-	-	-	-	-	-	-	-
443004	Sacco filt. Microfibra Microfiber filter bag	-	-	●	●	○	-	-	-	-	-	○	-	-	-	-
443005	Sacco filt. Microfibra Microfiber filter bag	-	-	-	-	-	○	○	-	-	-	-	○	-	-	-
443001	Sacco filt. Microfibra Microfiber filter bag	-	-	-	-	-	-	-	○	○	○	-	-	○	○	○
405429	Filtro in spugna Sponge filter	-	-	-	-	●	●	●	-	-	-	●	●	-	-	-
405432	Filtro in nylon Nylon filter	-	-	○	○	○	○	○	-	-	-	○	○	-	-	-
417432	Filtro in nylon Nylon filter	-	-	-	-	-	-	-	○	○	○	-	-	○	○	○
204566	Accessorio fisso frontale Front mounted squeegee	-	-	-	-	-	-	-	-	○	○	-	-	-	-	○
204641	Kit scarico rapido Hose drain kit	-	-	-	-	-	-	-	○	○	-	-	-	○	○	-
221157	Kit scarico rapido Hose drain kit	-	-	-	-	-	-	-	-	-	○	-	-	-	-	○

● Di serie
Standard

○ Opzione
Optional

- Non disponibile
Not available

* Con riserva di modifica delle caratteristiche tecniche
We reserve the right to make technical modifications



Timbro e firma del rivenditore
Dealer's signature and stamp

TMB srl

Via Cà Nova Zampieri, 5
37057 San Giovanni Lupatoto VR
Italy
www.tmbvacuum.com

Easy Line

Aspiratori commerciali
polvere e polvere/liquidi

Commercial dry and wet/dry
vacuum cleaners



Your Better Choice



Easy Line

KIT ACCESSORI ACCESSORIES KIT



DATI TECNICI - TECHNICAL FEATURES	U.M. - M.U.	P106 D	P106 PLUS	P111 D	P112 D	P112 WD	P125 WD	P135 WD	P258 WD	P258 WDM	P258 WDB	A111 WD	A127 WD	A258 WD	A258 WDM	A258 WDB
Codice - Code	-	106421	106423	106424	106425	106427	106428	106429	106430	106431	106433	106434	106435	106437	106438	106439
Voltaggio; Frequenza - Voltage; Frequency	V ; Hz	230-240 ; 50/60	230-240 ; 50/60	230-240 ; 50/60	230-240 ; 50/60	230-240 ; 50/60	230-240 ; 50/60	230-240 ; 50/60	230-240 ; 50/60	230-240 ; 50/60	230-240 ; 50/60	230-240 ; 50/60	230-240 ; 50/60	230-240 ; 50/60	230-240 ; 50/60	230-240 ; 50/60
Motore - Motor	N.	1	1	1	1	1	1	1	2	2	2	1	1	2	2	2
Tipo - Type	-	Polvere Dry	Polvere Dry	Polvere Dry	Polvere Dry	Polvere&Liquidi Wet&Dry	Polvere&Liquidi Wet&Dry	Polvere&Liquidi Wet&Dry	Polvere&Liquidi Wet&Dry	Polvere&Liquidi Wet&Dry	Polvere&Liquidi Wet&Dry	Polvere&Liquidi Wet&Dry	Polvere&Liquidi Wet&Dry	Polvere&Liquidi Wet&Dry	Polvere&Liquidi Wet&Dry	Polvere&Liquidi Wet&Dry
Stadi - Stages	N.	Monostadio Single stage	Monostadio Single stage	Monostadio Single stage	Monostadio Single stage	Bistadio Double stage	Bistadio Double stage	Bistadio Double stage	Bistadio Double stage	Bistadio Double stage	Bistadio Double stage	Bistadio Double stage	Bistadio Double stage	Bistadio Double stage	Bistadio Double stage	Bistadio Double stage
Pot. Nom/Max. - Nom. Power/ Max Power	W	1100/1300 Diretto - Direct	1100/1300 Diretto - Direct	1100/1300 Diretto - Direct	1100/1300 Diretto - Direct	1200/1300 By-pass	1200/1300 By-pass	1200/1300 By-pass	2400/2600 By-pass	2400/2600 By-pass	2400/2600 By-pass	1200/1300 By-pass	1200/1300 By-pass	2400/2600 By-pass	2400/2600 By-pass	2400/2600 By-pass
Portata d'aria - Air flow	l/s - m³/h	45 - 162	45 - 162	45 - 162	45 - 162	46 - 166	46 - 166	46 - 166	92 - 331	92 - 331	92 - 331	46 - 166	46 - 166	92 - 331	92 - 331	92 - 331
Depressione - Water lift	mm H ₂ O - kPa	2500 - 25	2500 - 25	2500 - 25	2500 - 25	2100 - 21	2100 - 21	2100 - 21	2100 - 21	2100 - 21	2100 - 21	2100 - 21	2100 - 21	2100 - 21	2100 - 21	2100 - 21
Capacità totale fusto - Total capacity tank	l	13	13	22	25	25	35	45	77	77	77	22	35	77	77	77
Capacità utile fusto - Effective capacity tank	l	6	6	11	12	12	25	35	58	58	58	11	27	58	58	58
Materiale fusto - Material tank	-	Polipropilene Polypropylene	Polipropilene Polypropylene	Polipropilene Polypropylene	Polipropilene Polypropylene	Polipropilene Polypropylene	Polipropilene Polypropylene	Polipropilene Polypropylene	Polipropilene Polypropylene	Polipropilene Polypropylene	Polipropilene Polypropylene	Acciaio Inox Stainless steel	Acciaio Inox Stainless steel	Acciaio Inox Stainless steel	Acciaio Inox Stainless steel	Acciaio Inox Stainless steel
Lunghezza cavo - Cable lenght	m	10	10	10	10	7	7	7	7	7	7	7	7	7	7	7
Peso - Weight	kg	7	7	6,5	7	7	8	12	18,5	18,5	18,5	7,5	9	20	20	20
Dimensioni l x p x h - Sizes i x w x h	cm	34 x 41 x 39	34 x 41 x 46	36 x 36 x 57	38 x 38 x 56	38 x 38 x 56	40 x 40 x 65	46 x 46 x 75	50 x 65 x 92	51 x 60 x 95	51 x 60 x 95	36 x 36 x 57	36 x 36 x 76	51 x 60 x 95	51 x 60 x 95	51 x 60 x 95
Kit accessori - Accessories kit	-	Eesy Ø 32	Eesy Extra Ø 32	Easy Ø 32	Eesy Extra Ø 32	Easy Ø 37	Easy Ø 37	Easy Ø 37	Easy Ø 40	Easy Ø 40	Easy Ø 40	Easy Ø 37	Easy Ø 37	Easy Ø 40	Easy Ø 40	Easy Ø 40
Livello di rumore - Noise level	dB	61	61	61	61	70	70	70	72	72	72	70	70	72	72	72

BASCULANTE - TIP & POUR



Il sistema di capovolgimento del fusto rende molto semplice lo svuotamento dello stesso
Convenient "tip & pour" trolley system makes it easy and quick to empty the tank



FILTRI - FILTERS

LEGENDA - KEY WORDS

P: Fusto in polipropilene - Polypropylene tank
A: Fusto in acciaio - Stainless steel tank
W: Liquido - Wet
D: Polvere - Dry
M: Carrello fisso - Market trolley
B: Carrello basculante - Tip & pour trolley



Filtro in stoffa permanente
Permanent cloth filter



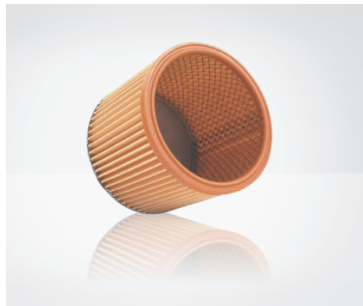
Filtro in spugna
Sponge filter



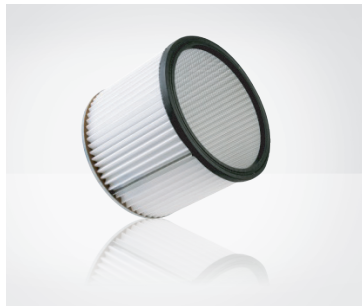
Sacco filtro microfibra
Microfiber filter bag



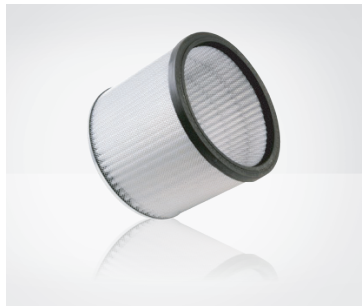
Filtro in nylon
Nylon filter



Filtro cartuccia
Cartridge filter



Filtro cartuccia lavabile
Washable cartridge filter



Filtro cartuccia HEPA
HEPA cartridge filter



Kit scarico rapido
Hose drain kit



Accessorio fisso frontale
Front mounted squeegee